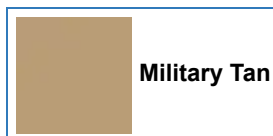
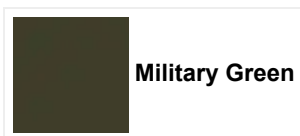


# MRZR Alpha 4 Military Tan



## Key Specifications

<b>4</b>	<b>225</b>	<b>2000</b>
PERSON CAPACITY	RANGE (MI)	PAYLOAD CAPACITY (LB)



## Engine & Drivetrain

Drive System	Pro Performance True 2WD /4WD /4WD Lock
Engine Braking System (EBS)	Standard
Engine Displacement	1.5L
Engine Type	Four Cylinder, Turbo Diesel
Fuel System	Common Rail, Direct Injection
Fuel Type	Diesel: D1, D2, JP5, JP8, F24, ULSD
Horsepower	118 hp
Torque	199 ft lb
Transmission	8 Speed Automatic

## Dimensions

Curb Weight	3090 lb
Front Rack Dimensions (L x W)	Not Equipped
Front Rack Load Capacity	Not Equipped
Fuel Capacity	10 gal
Fuel Range (GVW) (30 mph, flat, paved surface)	300 miles

This site uses cookies and related technologies, as described in our privacy policy, for purposes that may include site operation, analytics, enhanced user experience, or advertising.

Manage Settings

Accept

Decline All

<b>Payload Capacity</b>	2000 lb
<b>Person Capacity</b>	4
<b>Rear Bed Dimensions (L x W)</b>	50 x 50 in
<b>Rear Bed Load Capacity</b>	600 lb
<b>Rear Hitch Towing Rating</b>	2500 lb
<b>Water Fording at 5 mph</b>	24 in
<b>Wheelbase</b>	133.5 in
<b>Winch</b>	6000 lb Fixed Front Mount

## Brakes

<b>Front/Rear Brakes</b>	4 Wheel Hydraulic Disc with Triple Bore Front and Dual Bore Rear Calipers
<b>Parking Brake</b>	Park In-Transmission

## Specifications

<b>Brakelights</b>	LED
<b>Headlight</b>	LED, HI and LO Beam
<b>IEEE American Plug (Cigarette Lighter)</b>	3
<b>Instrumentation</b>	Digital Gauge, Speedometer, Odometer, Tachometer, Tripmeter, Hour Meter, Clock, Gear Indicator, Fuel Gauge, Voltage, Eng Temp, Trans Temp, Hi Temp/Low Batt Indication, IR Warning Light
<b>IR-Follow Me</b>	YES
<b>IR-Front</b>	2 Optional
<b>IR-Rear Brake</b>	YES
<b>Lighting Blackout</b>	YES
<b>USB Ports</b>	2

## Tires / Wheels

<b>Front Tires</b>	32x10R15
<b>Power Steering</b>	Electric
<b>Rear Tires</b>	32x10R15
<b>Rims</b>	15" Aluminum Beadlock

## Suspension

<b>Front Suspension</b>	Dual A-Arm 10.0" (25.4 cm) Travel
-------------------------	-----------------------------------

This site uses cookies and related technologies, as described in our privacy policy, for purposes that may include site operation, analytics, enhanced user experience, or advertising.

<b>Internal Aircraft Transportable</b>	YES
<b>Sling Loadable</b>	Standard

---

This site uses cookies and related technologies, as described in our privacy policy, for purposes that may include site operation, analytics, enhanced user experience, or advertising.