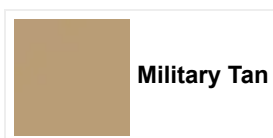
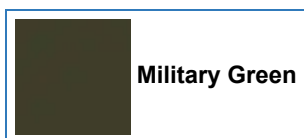


MRZR Alpha 4 Military Green



Key Specifications

2000	225	4
PAYLOAD CAPACITY (LB)	RANGE (MI)	PERSON CAPACITY



Engine & Drivetrain

Drive System	Pro Performance True 2WD /4WD /4WD Lock
Engine Braking System (EBS)	Standard
Engine Displacement	1.5L
Engine Type	Four Cylinder, Turbo Diesel
Fuel System	Common Rail, Direct Injection
Fuel Type	Diesel: D1, D2, JP5, JP8, F24, ULSD
Horsepower	118 hp
Torque	199 ft lb
Transmission	8 Speed Automatic

Dimensions

Curb Weight	3090 lb
Front Rack Dimensions (L x W)	Not Equipped
Front Rack Load Capacity	Not Equipped
Fuel Capacity	10 gal
Fuel Range (GVW) (30 mph, flat, paved surface)	300 miles

This site uses cookies and related technologies, as described in our privacy policy, for purposes that may include site operation, analytics, enhanced user experience, or advertising.

Manage Settings

Accept

Decline All

Overall Vehicle Size (L x W x H)	173.5 x 59.5 x 73.4 in
Payload Capacity	2000 lb
Person Capacity	4
Rear Bed Dimensions (L x W)	50 x 50 in
Rear Bed Load Capacity	600 lb
Rear Hitch Towing Rating	2500 lb
Water Fording at 5 mph	24 in
Wheelbase	133.5 in

Brakes

Front/Rear Brakes	4 Wheel Hydraulic Disc with Triple Bore Front and Dual Bore Rear Calipers
Parking Brake	Park In-Transmission

Specifications

Brakelights	LED
Headlight	LED, HI and LO Beam
IEEE American Plug (Cigarette Lighter)	3
Instrumentation	Digital Gauge, Speedometer, Odometer, Tachometer, Tripmeter, Hour Meter, Clock, Gear Indicator, Fuel Gauge, Voltage, Eng Temp, Trans Temp, Hi Temp/Low Batt Indication, IR Warning Light
IR-Follow Me	YES
IR-Front	2 Optional
IR-Rear Brake	YES
Lighting Blackout	YES
USB Ports	2

Tires / Wheels

Front Tires	32x10R15
Power Steering	Electric
Rear Tires	32x10R15
Rims	15" Aluminum Beadlock

Suspension

Front Suspension	Dual A-Arm 10.0" (25.4 cm) Travel
-------------------------	-----------------------------------

This site uses cookies and related technologies, as described in our privacy policy, for purposes that may include site operation, analytics, enhanced user experience, or advertising.

Internal Aircraft Transportable	YES
Sling Loadable	Standard

This site uses cookies and related technologies, as described in our privacy policy, for purposes that may include site operation, analytics, enhanced user experience, or advertising.