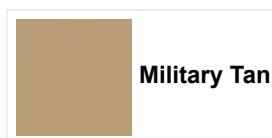
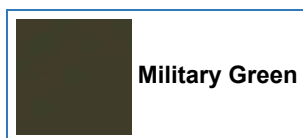


MRZR Alpha 2 Military Green



Key Specifications

| | | |
|-----------------|-----------------------|------------|
| 2 | 1400 | 225 |
| PERSON CAPACITY | PAYLOAD CAPACITY (LB) | RANGE (MI) |



Engine & Drivetrain

| | |
|-----------------------------|---|
| Drive System | Pro Performance True 2WD /4WD /4WD Lock |
| Engine Braking System (EBS) | Standard |
| Engine Displacement | 1.5L |
| Engine Type | Four Cylinder, Turbo Diesel |
| Fuel System | Common Rail, Direct Injection |
| Fuel Type | Diesel: D1, D2, JP5, JP8, F24, ULSD |
| Horsepower | 118 hp |
| Torque | 199 ft lb |
| Transmission | 8 Speed Automatic |

Dimensions

| | |
|--|--------------|
| Curb Weight | 2900 lb |
| Front Rack Dimensions (L x W) | Not Equipped |
| Front Rack Load Capacity | Not Equipped |
| Fuel Capacity | 10 gal |
| Fuel Range (GVW) (30 mph, flat, paved surface) | 300 miles |

This site uses cookies and related technologies, as described in our privacy policy, for purposes that may include site operation, analytics, enhanced user experience, or advertising.

Manage Settings

Accept

Decline All

| | |
|------------------------------------|---------------------------|
| Payload Capacity | 1400 lb |
| Person Capacity | 2 |
| Rear Bed Dimensions (L x W) | 50 x 50 in |
| Rear Bed Load Capacity | 600 lb |
| Rear Hitch Towing Rating | 2500 lb |
| Water Fording at 5 mph | 24 in |
| Wheelbase | |
| Winch | 6000 lb Fixed Front Mount |

Brakes

| | |
|--------------------------|---|
| Front/Rear Brakes | 4 Wheel Hydraulic Disc with Triple Bore Front and Dual Bore Rear Calipers |
| Parking Brake | Park In-Transmission |

Specifications

| | |
|---|--|
| Brakelights | LED |
| Headlight | LED, HI and LO Beam |
| IEEE American Plug (Cigarette Lighter) | 2 |
| Instrumentation | Digital Gauge, Speedometer, Odometer, Tachometer, Tripmeter, Hour Meter, Clock, Gear Indicator, Fuel Gauge, Voltage, Eng Temp, Trans Temp, Hi Temp/Low Batt Indication, IR Warning Light |
| IR-Follow Me | YES |
| IR-Front | 2 Optional |
| IR-Rear Brake | YES |
| Lighting Blackout | YES |
| USB Ports | 2 |

Tires / Wheels

| | |
|-----------------------|-----------------------|
| Front Tires | 32x10R15 |
| Power Steering | Electric |
| Rear Tires | 32x10R15 |
| Rims | 15" Aluminum Beadlock |

Suspension

| | |
|-------------------------|-----------------------------------|
| Front Suspension | Dual A-Arm 10.0" (25.4 cm) Travel |
|-------------------------|-----------------------------------|

This site uses cookies and related technologies, as described in our privacy policy, for purposes that may include site operation, analytics, enhanced user experience, or advertising.

| | |
|--|----------|
| Internal Aircraft Transportable | YES |
| Sling Loadable | Standard |

This site uses cookies and related technologies, as described in our privacy policy, for purposes that may include site operation, analytics, enhanced user experience, or advertising.